

# A new approach to decking



# biform

SOLID COMPOSITE DECKING







1

## Good for the environment

Wanting a stylish, beautiful deck, but concerned about the impact it might have on the environment? Made from recycled plastic and waste timber fibre, BiForm composite decking offers a truly sustainable alternative to hardwood timber decking.

2

## BRANZ Appraised

Here at BiForm, our BRANZ Appraisal No. 680 [2015], is something that we are proud of, and being the only BRANZ appraised Composite Decking on the market, it is another thing that sets us apart. After rigorous testing, our decking was issued the BRANZ Appraisal.



3

## Low maintenance

Life is too busy to worry about the cumbersome process of, staining, and oiling your deck. Unlike timber, BiForm composite decks won't crack, warp or rot over time.

4

## 25 Year Limited Warranty

Our composite decking expertise and the extensive testing we have done on our decking gives us confidence in offering customers a 25 year limited warranty - one of the best in the market.



BiForm is an eco-friendly and durable alternative to traditional hardwood decking. While composite decking has been widely used in other parts of the world for decades, it's still relatively new in New Zealand. A 15-year track record of successful hands-on development and testing has seen the BiForm team establish themselves as leaders in the local market.

# Eco-friendly solid composite decking

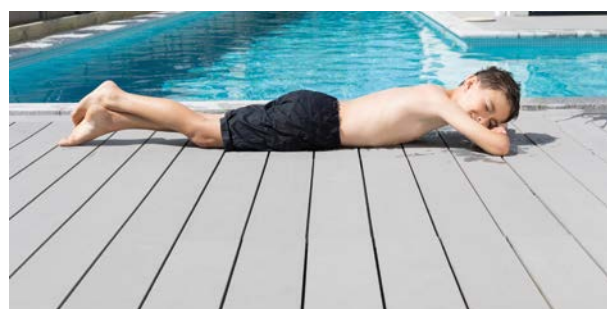
## Decks designed for New Zealand conditions

BiForm Solid Composite Decking has been specifically developed for New Zealand's harsh weather conditions. While most composites consist of 50% plastic, BiForm have opted for 30% plastic content, allowing for extra durability when standing up to New Zealand's heightened UV. Less plastic, means less thermal expansion and contraction.



## Family friendly

When planning your outdoor decking area, family safety is paramount. Thanks to our hidden fixing clip system and a safe anti-fungal treatment, there's no need to worry about little feet getting caught on nasty nails, splinters, or mysterious chemicals lurking on your deck. BiForm decking has an R11 Slip Resistance so it is safe underfoot around spas and pools.



## Long lasting, low maintenance

Our formula, combining timber and plastic, brings out the best of both elements, creating a durable decking alternative that is built to outlast and out perform regular decking timber. No oiling staining or painting required. Keep it clean and your BiForm composite deck will reward you with years of low maintenance pleasure.



## 25 Year Warranty

As New Zealand's leading supplier of composite decking, BiForm is pleased to offer our transferable 25 year limited warranty. After 15 years experience with our product in New Zealand's high UV and high relative humidity conditions, alongside our robust testing, we are confident in offering our customers this peace of mind.





BiForm Solid Composite decking boards are a convenient 4850mm long, giving a long run while simultaneously reducing waste and minimising thermal movement. Supported by well designed accessories, available in two useful sizes and four different colours, we have a board for all situations.

# BiForm Decking

Why Choose BiForm?	bi <b>form</b>	Timber
Low-maintenance	✓	✗
No need to stain or oil	✓	✗
Branz Appraised	✓	✗
UV-tested and resistant	✓	✗
Environmentally friendly	✓	✗
Won't crack or warp	✓	✗
Uniform length	✓	✗
Hidden fixing system	✓	✗
Anti-fungal	✓	✗
Family safe (no splinters)	✓	✗

## BiForm Decking – Form 130

130mm x 19mm x 4850mm

Our most popular profile. Form 130 can be used in all residential decking situations, and popular in commercial applications where restrictive height is an issue or minimal carbon footprint is required. Available in all four colours.



## BiForm Decking – Form 140

140mm x 25mm x 4850mm

Form 140 can be used in residential and commercial applications such as public viewing platforms, walkways, restaurants and seating. For use where joist spacings are set at maximum 450mm. Available in four colours.



## BiForm Decking – Colour options



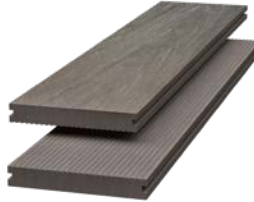
### Mid Grey

A classy emulation of weathered off timber.



### Cedar Brown

Replicates the warm gingery tones of Cedar.



### Camo Grey

Two tone grey mimics the grain of silvered timber.



### Camo Brown

Two tone brown mimics the grain of stained timber.

# BiForm Screening

68mm x 17mm 2700mm

BiForm Solid Composite Screening is a low-maintenance, environmentally-friendly option that can be used for carports, privacy screening, and more.

## Why use BiForm Composite Screening?

- No painting or staining required
- Low-maintenance
- Won't rot or decay
- Simple installation
- Environmentally-friendly
- Natural look

## Colour Options



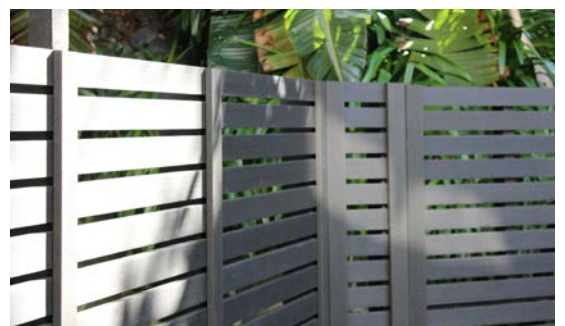
Mid Grey



Charcoal



Cedar Brown



# BiForm Accessories

## Form 130 Decking Clip

Concealed Fixing Clip  
(Sold in buckets of 200)



## Form 140 Decking Clip

Concealed Fixing Clip  
(Sold in buckets of 200)



## Stop Clip

(Sold in bags of 10)



## Black Stainless Steel Fixing Screw

For use with black fixing clips  
(Included in bucket of 200 Decking Clips)



## Winged Composite Deck Screw

For surface fixing perimeter boards  
(Sold in bags of 50)



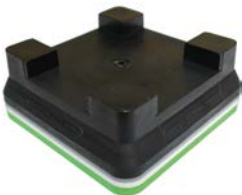
## Reduce Gap Clip

(Sold in bags of 100)



## Stack N Pack Joist Mounts

Raises floating joists to allow water flow. Joist is raised 20mm with each stackable joist mount  
(Sold in boxes of 24)



## Stack N Pack Packers

Available in 2mm, 3mm and 5mm heights. Used in conjunction with Stack N Pack Joist Mounts to achieve the desired height.



## Got a timber frame?

BiForm Decks can be laid over regular timber substructure



See the installation instructions online at: [www.biform.co.nz](http://www.biform.co.nz)

Free box of samples available on request.

Free layout and design and quote from plans available.

Send to: [info@biform.co.nz](mailto:info@biform.co.nz)

**biform**  
SOLID COMPOSITE DECKING

We would love to hear your feedback or questions.

International Customers: +64 9 636 3511 | New Zealand 09 636 3511 / 0800 449 274

[www.biform.co.nz](http://www.biform.co.nz)